

Running the **DEAFrontier**TM Free Version

Before you run the DEAFrontier software.....	1
Load Excel Solver in Excel 97, 2002 and 2003 (XP).....	4
Load Excel Solver in Excel 2007.....	5
Run the DEAFrontier Software	5

© Joe Zhu

www.deafrontier.com

Running the DEAFrontier™ Free Version

Before you run the DEAFrontier software

Before you load the DEAFrontierFree software, the Excel program must be open/loaded first. And then the Solver Parameters dialog box must at least be displayed once in your Excel session. Otherwise, an error (shown in Figure 1) may occur when you run the software. This error message means that the Excel Solver is not found by the DEAFrontier software. *(If the DEAFrontier software is installed in the directory where the Excel Solver is installed, you may not need to load the Excel Solver first.)*

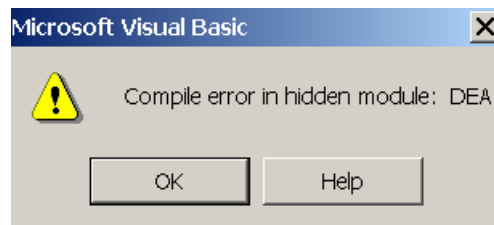
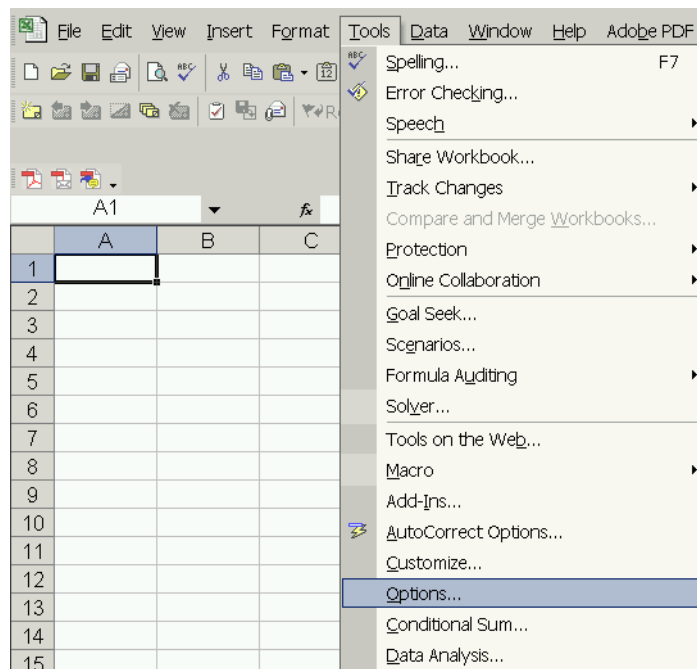


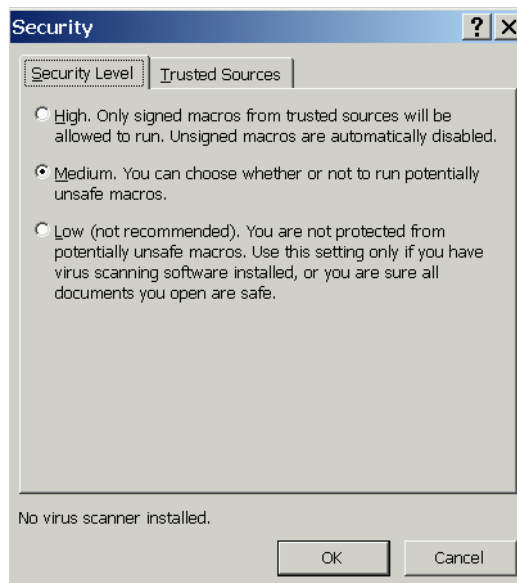
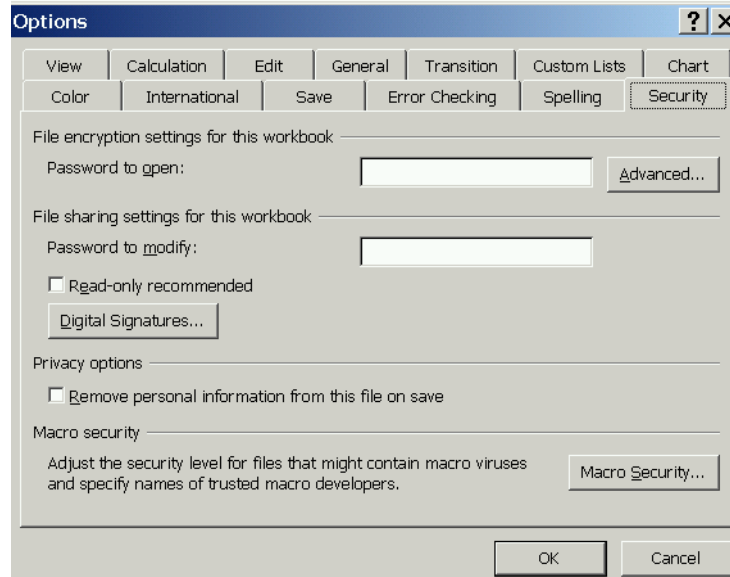
Figure 1

Please also set the Macro Security to Medium Level in the Excel. This can be done by selecting the Tools/Options menu item as shown in the following



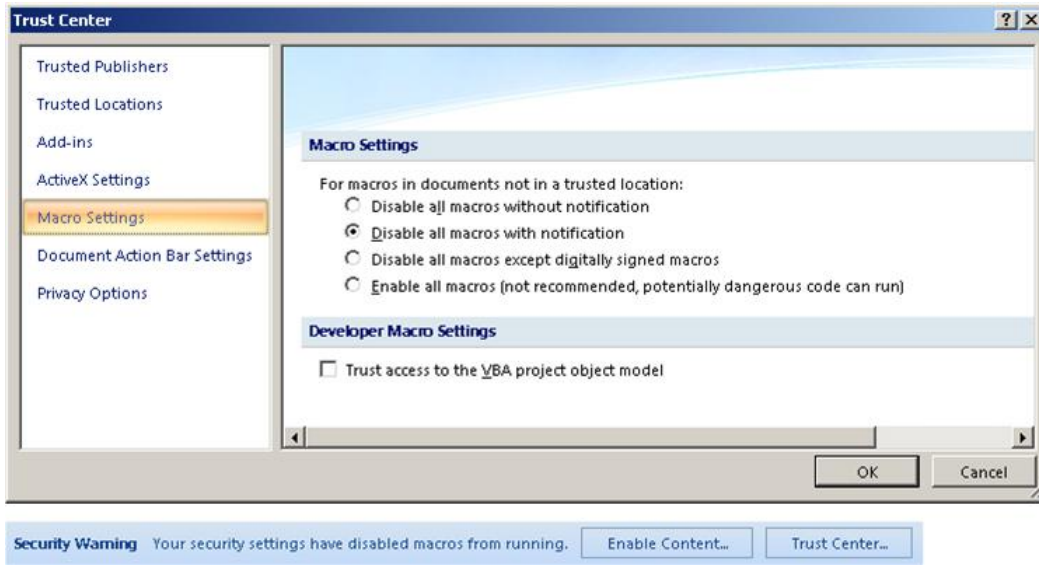
Running the DEAFrontier™ Free Version

In the Option menu item, click the Macro Security button and then select the “Medium” option.



Running the DEAFrontier™ Free Version

If you are using Excel 2007, you need to do this in the Trust Center: check (1) enable all macros and (2) Trust access to the VBA project object model. You may also need to specify the directory where the DEAFrontier software is located as “Trusted Locations”.

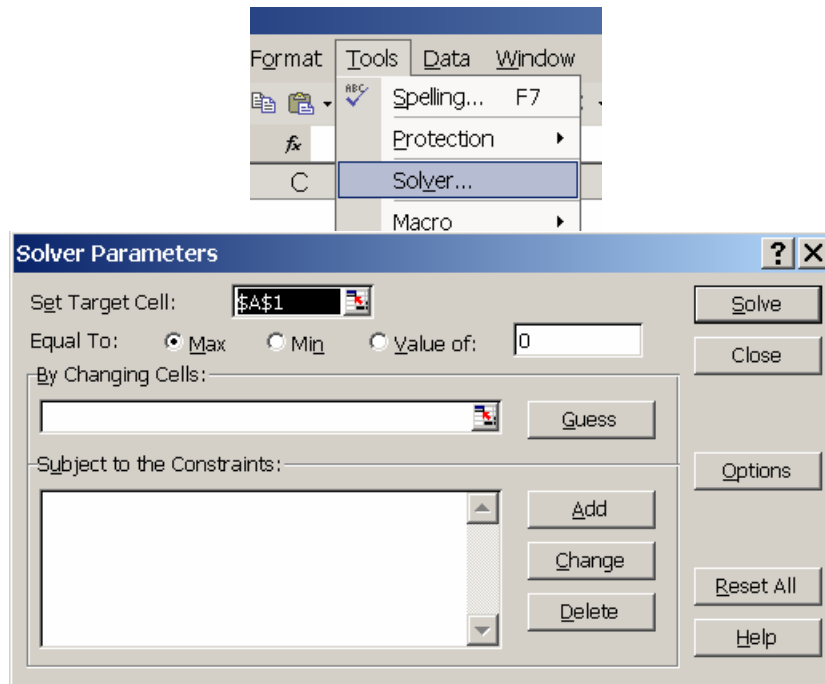


Running the DEAFrontier™ Free Version

Load Excel Solver in Excel 97, 2002 and 2003 (XP)

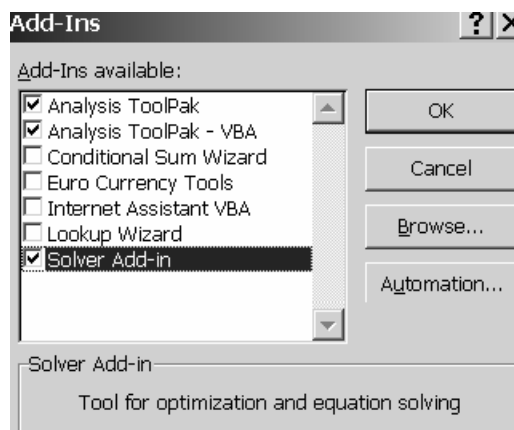
You may use the following steps. (Close the DEAFrontier if it is already opened using the “Quit” menu item.)

Step 1: Open Excel, and then load Solver parameters dialog box by using the Tools/Solver menu item.



Step 2: Click Close to close the Solver parameters dialog box. Now, the Solver has been loaded.


If Solver does not exist in the Tools menu, you need to select Tools/Add-Ins, and check the Solver box, as shown in Figure 2. (If Solver does not show in the Add-Ins, you need to install the Solver first.)



Running the DEAFrontier™ Free Version

Figure 2

Load Excel Solver in Excel 2007

1. Click the **Microsoft Office Button** , and then click **Excel Options**.
2. Click **Add-Ins**, and then in the **Manage** box, select **Excel Add-ins**.
3. Click **Go**.
4. In the **Add-Ins available** box, select the **Solver Add-in** check box, and then click **OK**.

Tip: If **Solver Add-in** is not listed in the **Add-Ins available** box, click **Browse** to locate the add-in.

If you get prompted that the Solver Add-in is not currently installed on your computer, click **Yes** to install it.

5. After you load the Solver Add-in, the **Solver** command is available in the **Analysis** group on the **Data** tab.

Run the DEAFrontier Software

Load the DEA software by opening (i) “DEAFrontierFree.xla” for Excel 97, 2002 and 2003, or (ii) “DEAFrontierFree2007.xlam” for Excel 2007.

You will see a new Menu item “DEA” at the end of Excel Menu. Now, the software is ready to run. (Please see the Format for Data Sheet for proper setup of data sets.)

For Excel 2007: to locate the DEA Menu, Office 2007 users select the Add-Ins tab and navigate to the DEA menu option. The DEA menus will not always be visible, as they were in Office 2003. Users can move individual commands to a small Quick Access bar in Office 2007 to make them visible all the time.

Please make sure that the Excel Solver works properly. One can use the file “solvertest.xls” to test whether the Excel Solver works. This test file is available at www.deafrontier.com/solvertest.xls.)